

Trade Transaction Fees & Charges Schedule

Effective from: 16 December 2022

Out of pocket expenses applicable to each transaction, and charges deducted or collected by correspondent banks are in addition to these charges.

Import Documentary Collections

Document Handling Fee	0.25% of collection amount Minimum AUD90 Maximum AUD850
Accepted Bills Received for Payment	AUD80
Documents Free of Payment (Charged where an overseas bank instructs us to release collection documents to you free of payment)	AUD80
Consignment Fee (Endorsement of shipping documents consigned to the bank)	AUD100
Air Waybill Release Issuance	AUD90
Avalisation of Bills of Exchange	Price on application
Dishonour Fee (Charged on the dishonour of payment instrument by the institution on which it is drawn)	AUD80
Re-presentation Fee (Charged when we need to re-present a dishonoured payment instrument)	AUD80
Additional Handling Fee (Charged in addition to document handling fee where amendments to the terms of the collection are advised to the presenting bank or on dishonour)	AUD80

Import Documentary Letters of Credit

Issuance (via manual channel)	AUD150 plus SWIFT fee
Issuance (via Bank's e-channel)	AUD75 plus SWIFT fee
Amendment (via manual channel)	AUD100 plus SWIFT fee (per amendment)
Amendment (via Bank's e-channel)	AUD50 plus SWIFT fee (per amendment)
Cancellation Fee (When we agree to cancel an IDLC for you)	0.25% of undrawn amount Minimum AUD75
Expired Undrawn Balance Fee (Where IDLC balance at expiry is equal to or greater than AUD 5,000 or equivalent)	0.25% of undrawn amount Minimum AUD75
Cash Covered Issuance Structuring (Charged in addition to applicable issuance and document handling fees for cash covered IDLC)	AUD250
Document Handling Fee (Applicable to each drawing received)	0.375% Minimum AUD100 No maximum
Acceptance/Deferred Payment Fee (Charged where we pay an IDLC on a term basis rather than at sight)	1.5% p.a. Minimum AUD80
Discrepancy Fee (Deducted from proceeds remitted where charges are for the beneficiary's account, otherwise to be charged to the applicant.)	USD100 or equivalent in other currency
Reimbursement (Paying Bank) Commission (Deducted from proceeds remitted where charges are for the beneficiary's account, otherwise to be charged to the applicant.)	USD100 or equivalent in other currency

Foreign Bills Negotiated

Document Handling Fee	0.25% of FBN amount Minimum AUD90 Maximum AUD850
Additional Handling Fee (Charged in addition to document handling fee where amendments to the terms of the collection are advised to the presenting bank or on dishonour)	AUD80 (inclusive of GST)
Documents Free of Payment (Charged when you, as a drawer, instruct us to instruct an overseas bank to release collection documents free of payment)	AUD80 (inclusive of GST)
Tracer Message Sent via SWIFT (Charged to enquire about documents sent for collection)	AUD15

Export Documentary Collections

Document Handling Fee	0.25% of the collection amount Minimum AUD90 Maximum AUD850 (inclusive of GST)
Additional Handling Fee (Charged in addition to the document handling fee where amendments to the terms of collection are advised to the presenting bank or on dishonour)	AUD80 (includes of GST)
Documents Free of Payment (Charged when you, as a drawer, instruct us to instruct an overseas bank to release collection documents free of payment)	AUD80 (includes of GST)
Tracer Message Sent via SWIFT (Charged to enquire about documents sent for collection)	AUD15

Export Documentary Letters of Credit

Advising Fee (Charged for each EDLC advised to non-CBA customers; refundable against presentation of shipping documents to CBA)	AUD90
Advising of Amendment Fee (Charged for each EDLC amendment advised to non-CBA customers; refundable against presentation of shipping documents to CBA)	AUD50
Transfer of Export Documentary Letter of Credit	0.25% on the value of the transfer, Minimum AUD2,000
Transfer of Amendment	AUD100
Back-to-back Letter of Credit	Price on application
Assignment of Proceeds	AUD100 per assignment
Confirmation of Export Documentary Letter of Credit	Price on application
Without Recourse Export Finance	Price on application
Document Handling Fee (Applicable to each drawing received)	0.25% of drawing amount Minimum AUD80 Maximum AUD1000
Acceptance of Term Drafts Drawn on CBA	Price on application Minimum AUD80
Negotiation Under Reserve (Charged in addition to document handling fee)	AUD100
Discrepancy Fee	AUD50 per set of documents
Additional Handling Fee	AUD50
SWIFT Fee (Deducted from proceeds remitted where charges are for the beneficiary's account, otherwise chargeable to the applicant)	AUD15

Standby Letter of Credit/Bank Guarantee/Bond (Inward)

Advising Fee (Charged for each instrument advised to a non-CBA customer)	AUD250
Advising Amendment Fee (Charged for each instrument advised to a non-CBA customer)	AUD100 per amendment
Claims/Demand Handling Fee (Collection Service)	AUD350
Authentication Fee (Authentication of hardcopy of SBLC/Bank Guarantee/Bond issued by another bank)	AUD250

Trade Advances

Drawdown (greater than AUD10,000)	AUD50
Drawdown (less than AUD10,000)	AUD75
Rollover (greater than AUD10,000)	AUD50
Rollover (less than AUD10,000)	AUD75
Prepayment (Charged if the advance is repaid prior to maturity)	AUD50 plus break costs if applicable
Trade Advance IMT fee	AUD13.20

Trade Finance Facility

Establishment Fee	Price on application
Facility Fee	Price on application
Interest	Price on application - where applicable, chargeable at a rate relevant to the currency, term and amount

Out of Pocket Expense

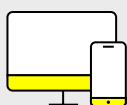
SWIFT per message	AUD15
Courier (International)	At cost - minimum AUD30
Courier (Domestic)	At cost - minimum AUD20
Express Post	At cost - minimum AUD10

Bank's Trade E-Channel

System set-up	Waived (Free of Charge)*
Monthly channel cost	Waived (Free of Charge)*

*The Bank reserves the right to change this in the future after provision of a suitable period of notice to all impacted customers.

For more information



Go to **commbank.com.au** or call **1300 654 112**
(8.30am to 5.30pm AEST Monday to Friday)

Important Information: When we provide a foreign exchange service to you for the conversion of one currency to another currency, we will apply the following exchange rate to the transaction (unless otherwise negotiated with the Bank):

Where one of the currencies to be exchanged in your transaction includes Australian dollars (AUD), the exchange rate applied will be as quoted by the Bank on <https://www.commbank.com.au/personal/international/foreign-exchange-rates.html> with reference to:

- 'Send International Money Transfer' if your transaction involves you selling AUD and buying a foreign currency, or
- 'Receive International Money Transfer' if your transaction involves you buying AUD and selling a foreign currency.

Where none of the currencies in your transaction includes AUD, please refer to the 'Foreign Exchange Calculator' located at the above URL.

Please note that fees and charges may apply to a foreign exchange conversion. Any applicable fees and charges will be set out in the 'Standard fees and charges for international payments and travel funds' available on the Bank's website detailed above.

Commonwealth Bank has a number of personnel who are experienced in import and export transactions and are well equipped to discuss a trader's individual requirements. They will provide assistance on the most appropriate way to structure a transaction, making the best use of trader's financial resources, whilst at the same time providing information on mitigating the risks that are likely to be encountered.

To be placed in contact with one of our Trade Specialists, please call the Commonwealth Bank Trade Service Centre on 1300 654 112 (8.30am to 5.30pm AEST Monday to Friday).

The Bank reserves the right to impose a new fee or vary existing fees shown in this brochure. Where the Banking Code of Practice applies, variations will be notified to Commonwealth Bank customers in accordance with the Banking Code of Practice.

